

AICu KABLOVSKA PAPUČICA

AICu CABLE LUG

Dimenzije Al dela papučice po DIN-u 46329

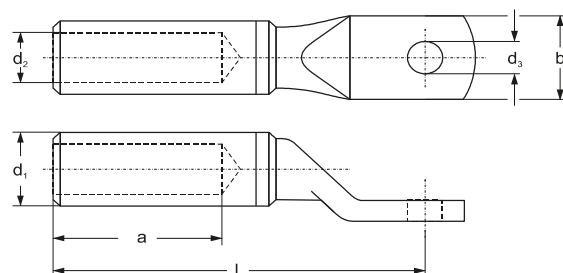
Dimenzije Cu dela papučice po DIN-u 46235

Materijal: Aluminijum 99.5%, Elektrolitički bakar

Površina: Hemijski pasivizirana /na poseban zahtev elektro kalaisana/

Namena: Koristi se za nenapregnute veze do 35kV

Presovanje: Šestougaono



Dimensions of Al part of lug acc.to DIN 46329

Dimensions of Cu part of lug acc.to DIN 46235

Material : Al 99,5%, ED Copper

Surface: Chemical passivated / on special request tin coted

Application-usage :Desined to use in termination up to 36kV

Compression: Hexagonal

Šifra proizvoda Code	Presek provodnika Conductor cross-section RM/SM ¹⁾ (mm ²)	Tip Type	Dimenzije / Dimensions (mm)						Broj presovanja Number of compressions mech./hydr.	Težina Weight approx kg/100pcs
			a	d ₂	d ₃	b	d ₁	L		
0700202	16	AICu 16/6	20	5.8	6.5	17	12.0	55	4/2	1,5
0700203	16	AICu 16/8	20	5.8	8.5	17	12.0	55	4/2	1,6
0700204	16	AICu 16/10	20	5.8	10.5	17	12.0	55	4/2	1,7
0700220	25	AICu 25/8	30	6.8	8.5	21	12.0	65	4/2	3,0
0700221	25	AICu 25/10	30	6.8	10.5	21	12.0	65	4/2	3,1
0700216	25	AICu 25/12	30	6.8	13.0	21	12.0	65	4/2	3,2
0700205	35	AICu 35/8	42	8.0	8.5	21	14.0	75	5/3	5,1
0700206	35	AICu 35/10	42	8.0	10.5	21	14.0	75	5/3	5,2
0700207	35	AICu 35/12	42	8.0	13.0	21	14.0	75	5/3	5,5
0700222	50	AICu 50/8	42	9.8	8.5	22	16.0	75	5/3	8,6
0700223	50	AICu 50/10	42	9.8	10.5	22	16.0	75	5/3	8,6
0700213	50	AICu 50/12	42	9.8	13.0	22	16.0	75	5/3	8,7
0700214	50	AICu 50/16	42	9.8	17.0	28	16.0	80	5/3	8,7
0700237	70	AICu 70/8	52	11.2	8.5	25	18.5	90	6/3	10,0
0700224	70	AICu 70/10	52	11.2	10.5	25	18.5	90	6/3	10,0
0700211	70	AICu 70/12	52	11.2	13.0	25	18.5	90	6/3	10,3
0700212	70	AICu 70/16	52	11.2	17.0	28	18.5	95	6/3	10,3
0700225	95	AICu 95/10	56	13.2	10.5	28	22.0	95	6/3	12,6
0700226	95	AICu 95/12	56	13.2	13.0	28	22.0	95	6/3	12,6
0700215	95	AICu 95/16	56	13.2	17.0	28	22.0	103	6/3	12,6
0700227	120	AICu 120/10	56	14.7	10.5	28	23.0	95	6/3	14,0
0700228	120	AICu 120/12	56	14.7	13.0	28	23.0	95	6/3	14,0
0700208	120	AICu 120/16	56	14.7	17.0	28	23.0	103	6/3	14,2
0700209	120	AICu 120/20	56	14.7	21.0	34	23.0	110	6/3	14,3
0700201	150	AICu 150/8	60	16.3	10.5	28	25.0	98	7/3	14,3
0700229	150	AICu 150/10	60	16.3	10.5	28	25.0	98	7/3	14,3
0700230	150	AICu 150/12	60	16.3	13.0	28	25.0	98	7/3	16,0
0700238	150	AICu 150/16	60	16.3	17.0	28	25.0	106	7/3	16,1
0700210	150	AICu 150/20	60	16.3	21.0	34	25.0	117	7/3	16,3
0700231	185	AICu 185/10	60	18.3	10.5	34	28.5	114	7/3	18,0
0700232	185	AICu 185/12	60	18.3	13.0	34	28.5	114	7/3	18,0
0700217	185	AICu 185/16	60	18.3	17.0	34	28.5	114	7/3	18,3
0700218	185	AICu 185/20	60	18.3	21.0	34	28.5	123	7/3	18,3
0700233	240	AICu 240/12	70	21.0	13.0	34	32.0	123	8/3	21,0
0700234	240	AICu 240/16	70	21.0	17.0	34	32.0	123	8/3	21,4
0700235	240	AICu 240/20	70	21.0	21.0	34	32.0	130	8/3	22,0

- 1) **RM** – žičani okrugli / **round stranded**
SM – žičani sektorski / **sector stranded**